

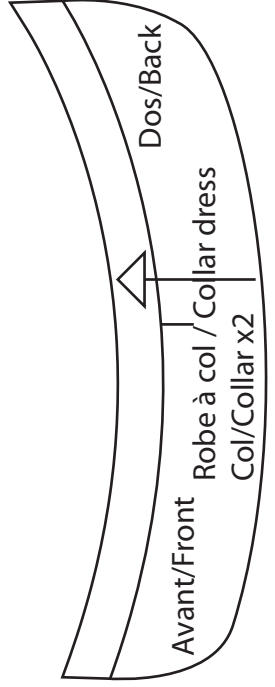
Milieu

Veste/Manteau à capuche
 Capuche
 Jacket/coat with hood
 Hood
 x1
 (x1 dans la doublure si doublé/x1 in lining if lined)

Pli/Pleat Milieu Pli/Pleat

Repère couture épaule/
 Shoulder seam mark

Pli/Pleat



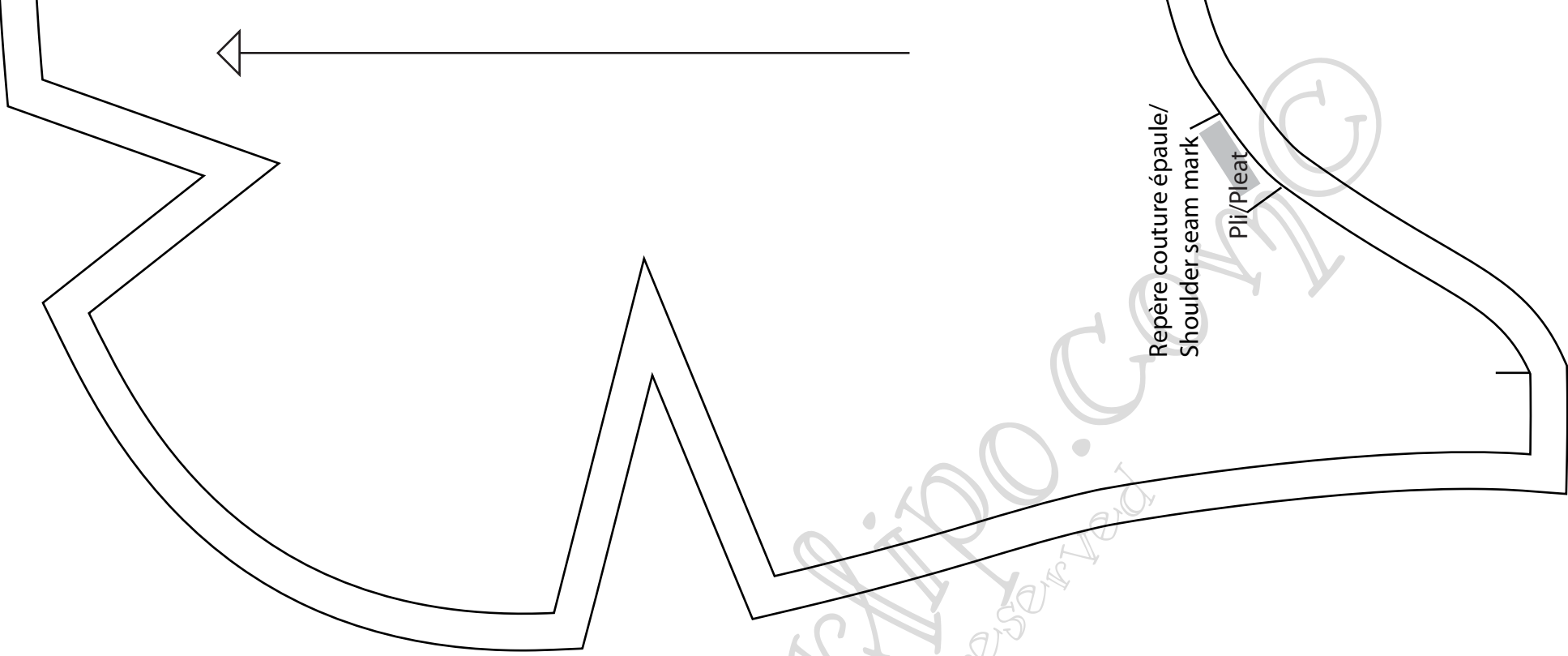
Avant/Front

Robe à col / Collar dress

Col/Collar x2

Dos/Back

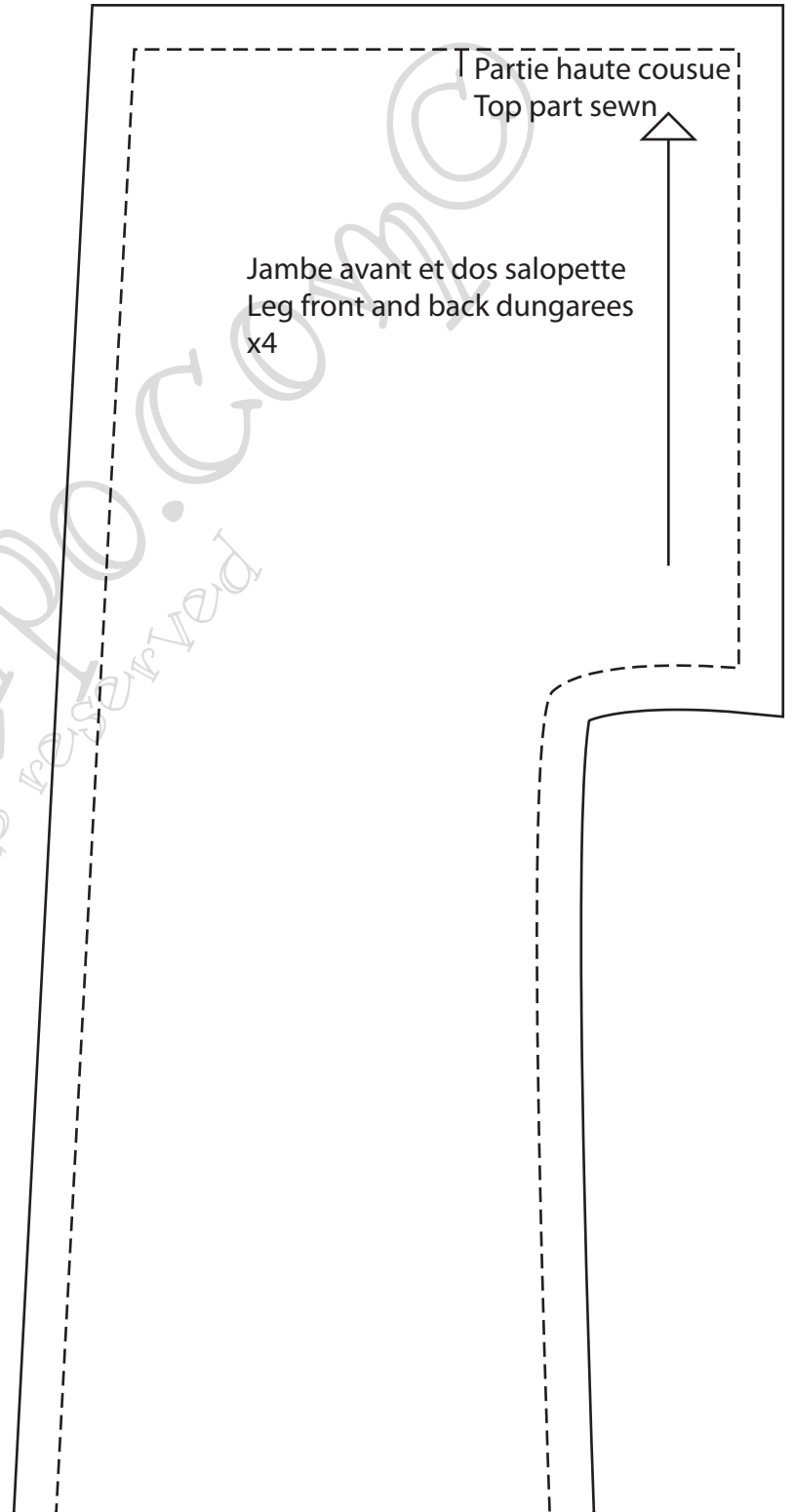
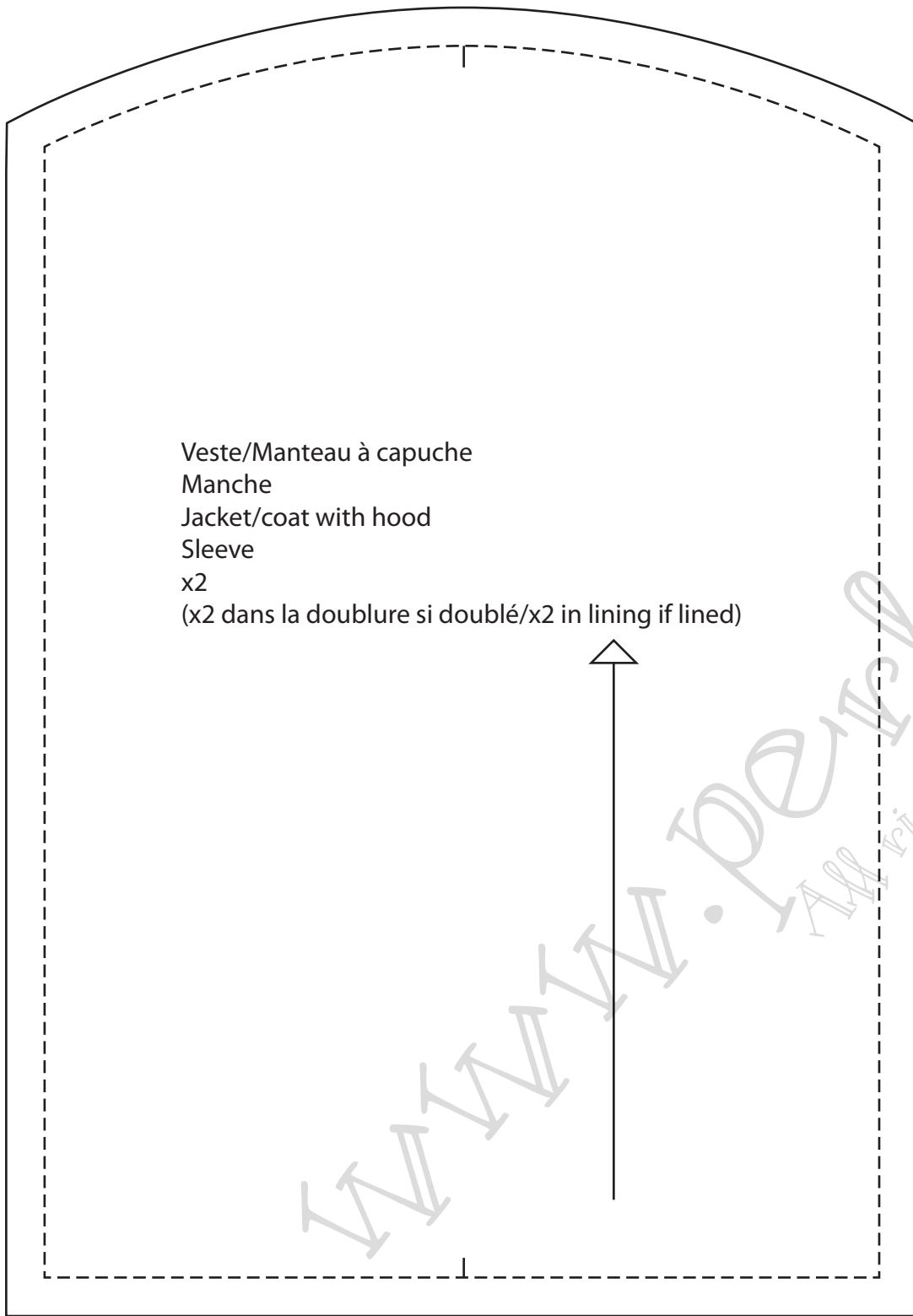
Perfilpo.com
 All rights reserved

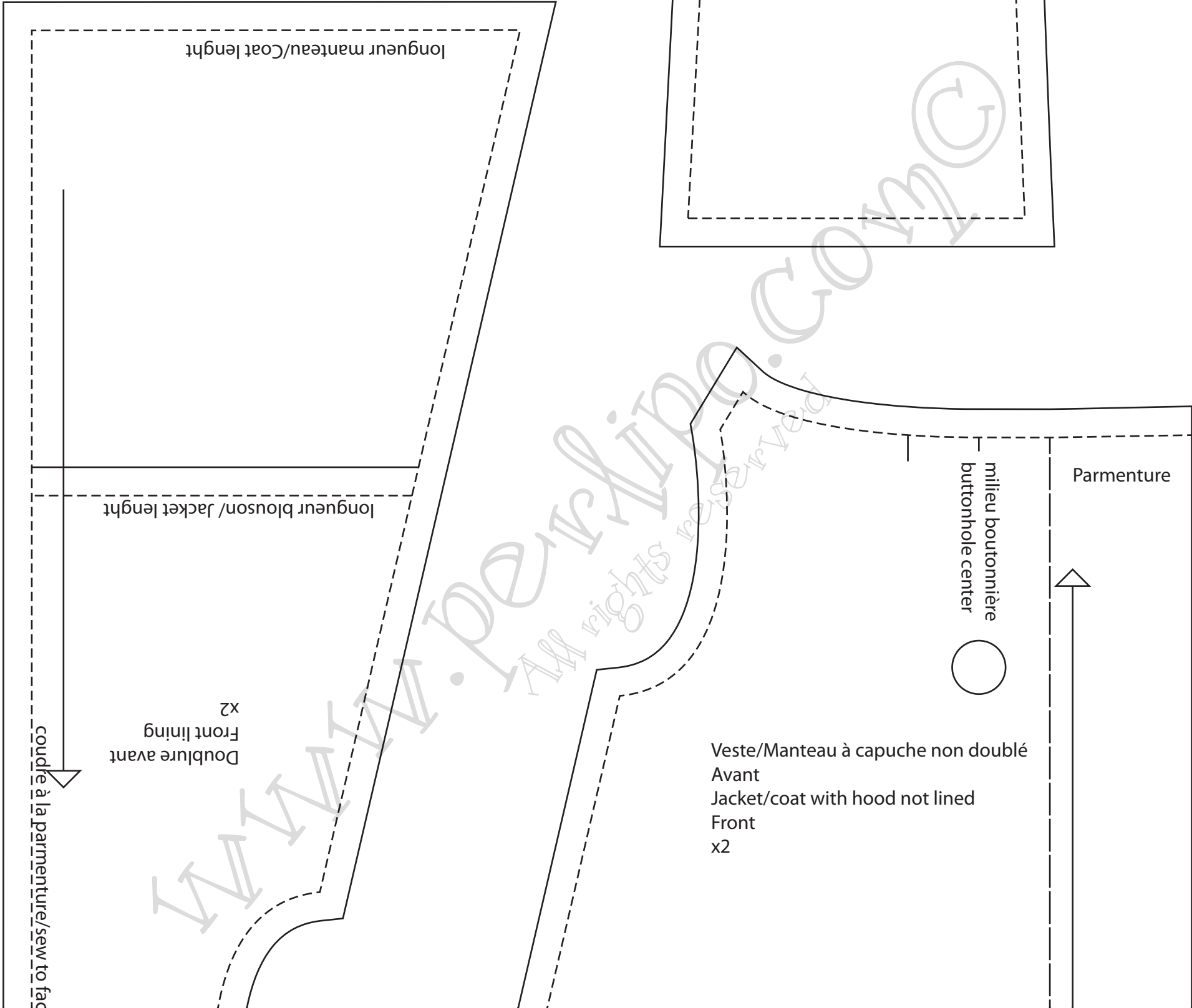


Repère couture épaule/
Shoulder seam mark

Pli/Pleat

www.berkipo.com
All rights reserved





longueur manteau/Coat length

longueur blouson/Jacket length

Doublure avant
Front lining
x2

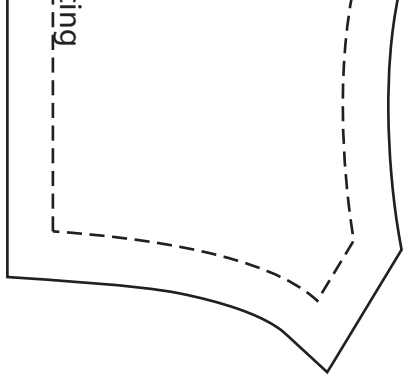
coudre à la parmenture/sew to facing

milieu boutonnière
buttonhole center

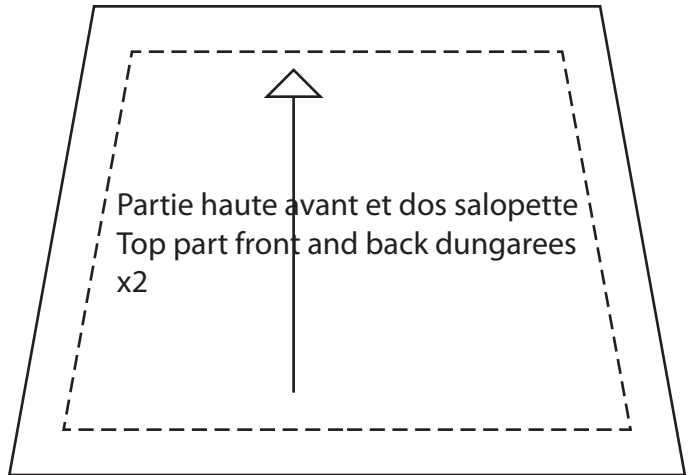


Parmenture

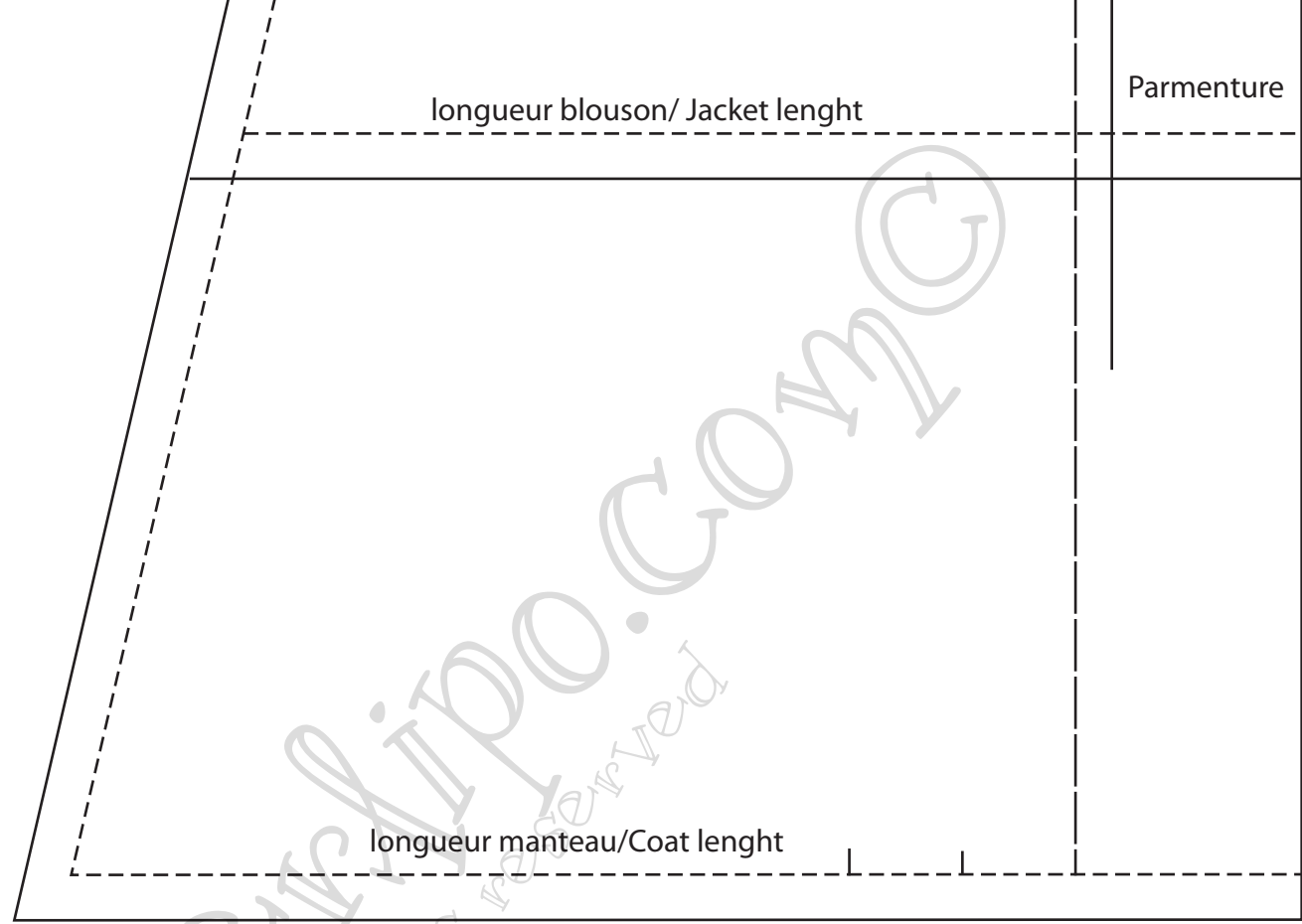
Veste/Manteau à capuche non doublé
Avant
Jacket/coat with hood not lined
Front
x2



longueur



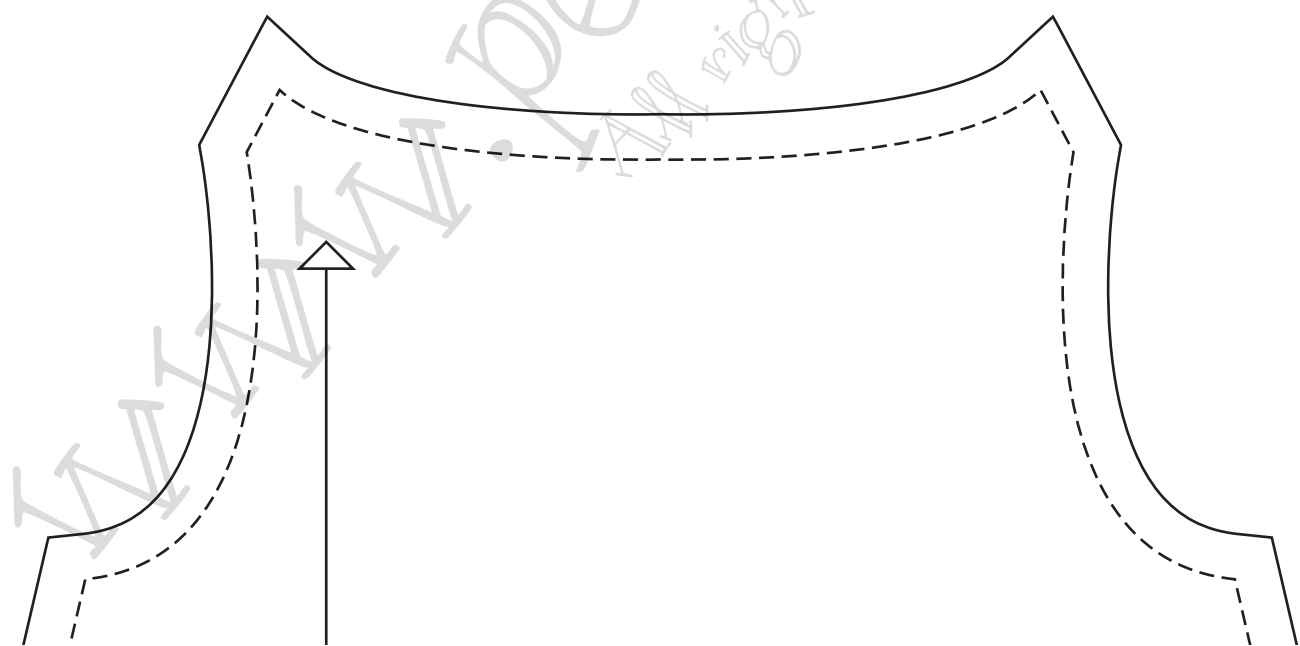
Partie haute avant et dos salopette
Top part front and back dungarees
x2



longueur blouson/ Jacket length

Parmenture

longueur manteau/Coat length

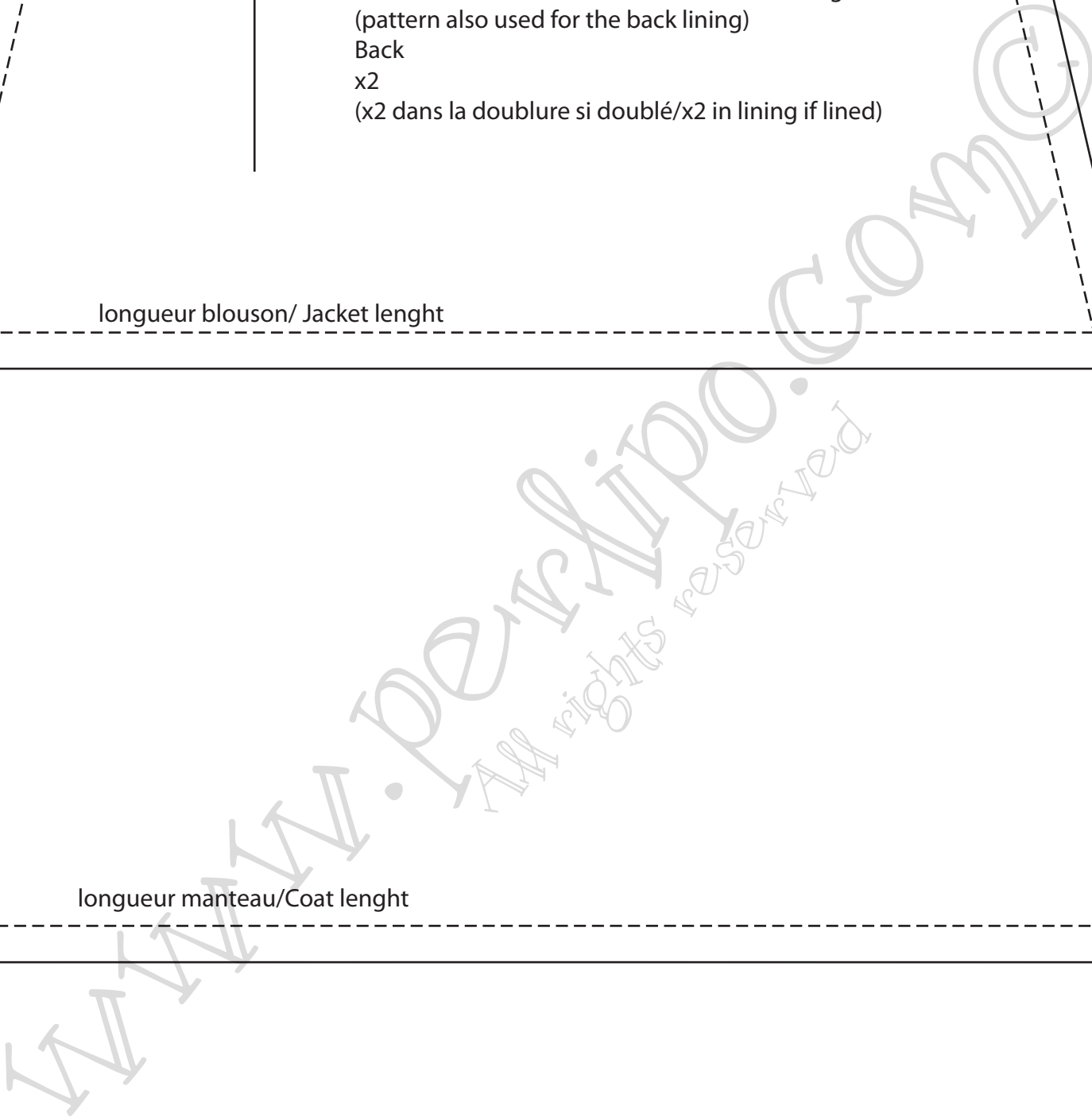


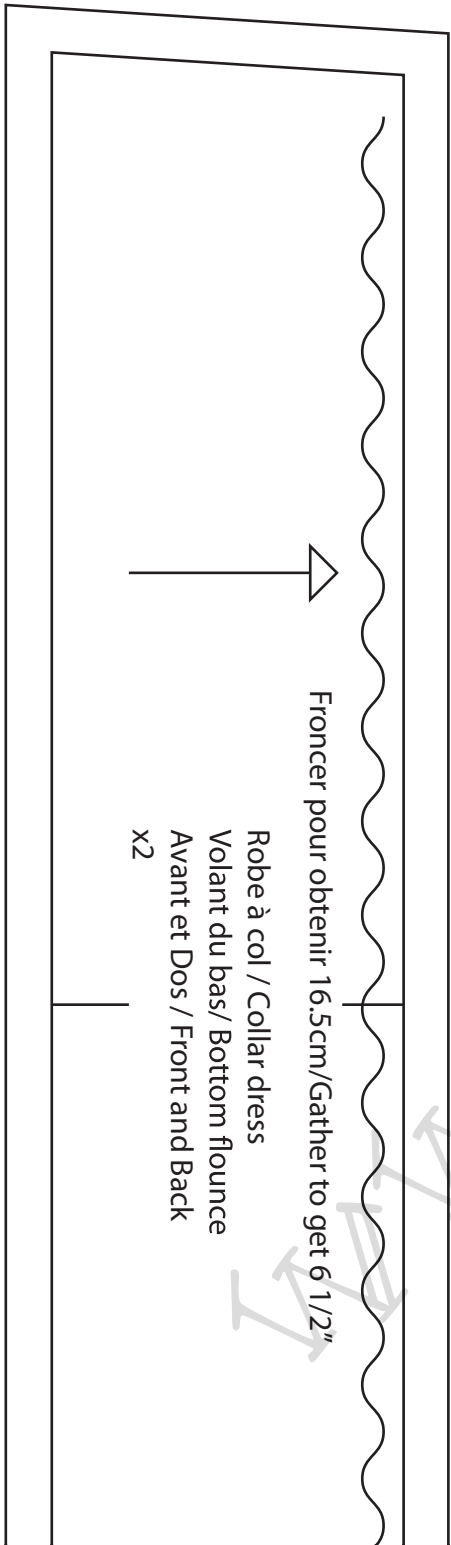
Copyright © All rights reserved
www.denisilpo.com

Veste/Manteau à capuche avec ou sans doublure
(patron utilisé également pour la doublure)
Dos
Jacket/coat with hood with or without a lining
(pattern also used for the back lining)
Back
x2
(x2 dans la doublure si doublé/x2 in lining if lined)

longueur blouson/ Jacket length

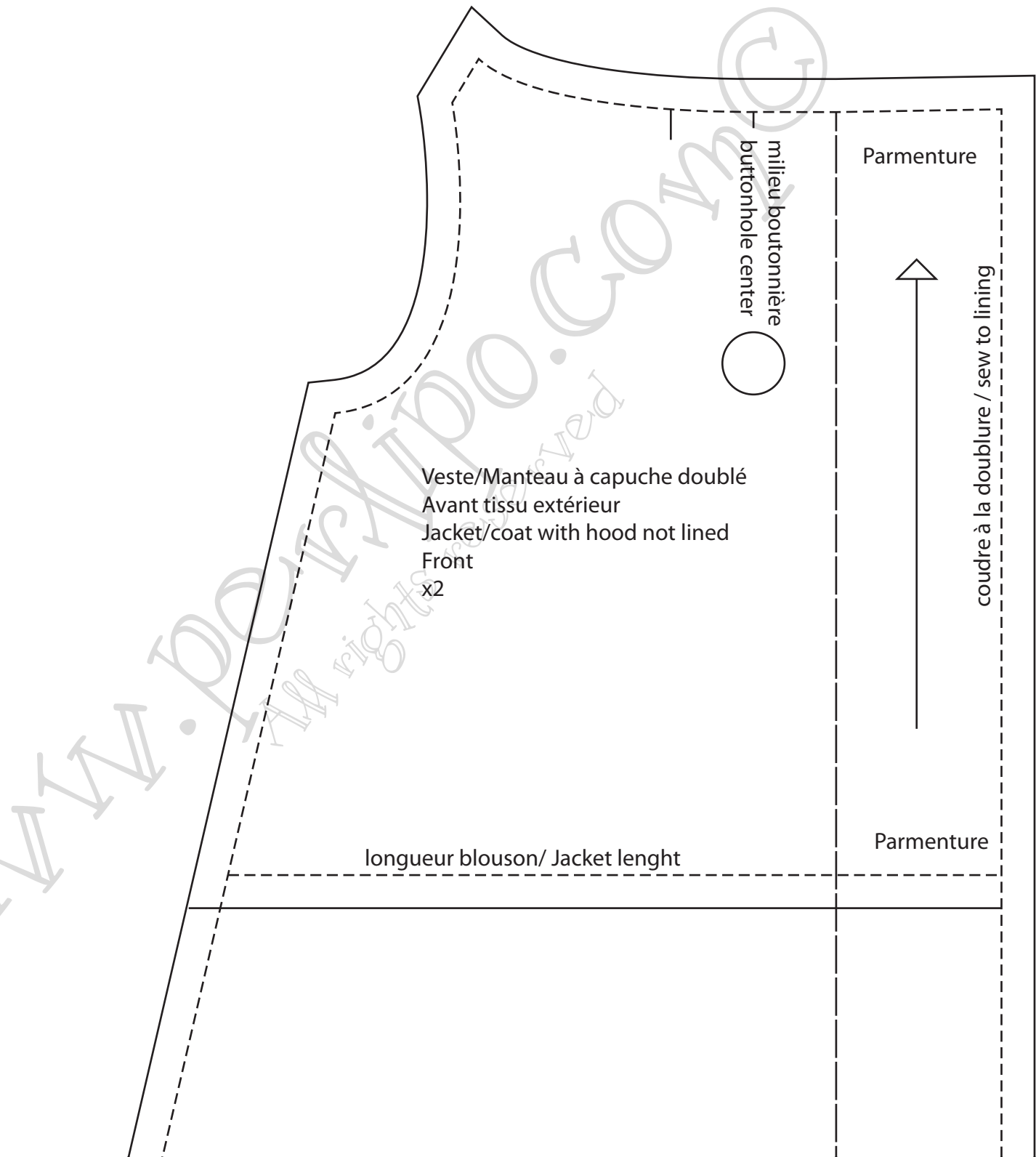
longueur manteau/Coat length





Froncer pour obtenir 16.5cm/Gather to get 6 1/2"

Robe à col / Collar dress
 Volant du bas/ Bottom flounce
 Avant et Dos / Front and Back
 x2



Veste/Manteau à capuche doublé
 Avant tissu extérieur
 Jacket/coat with hood not lined
 Front
 x2

milieu boutonnière
 buttonhole center

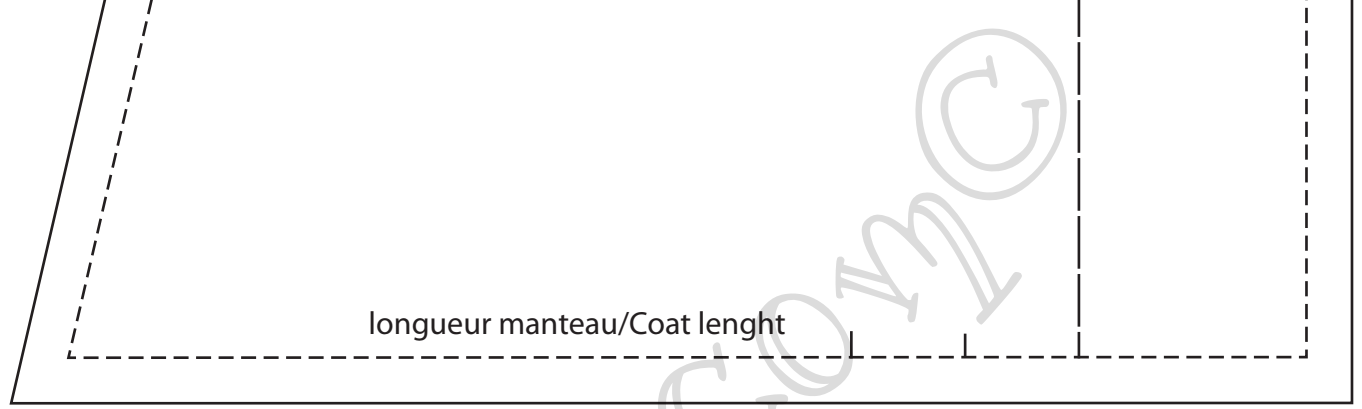
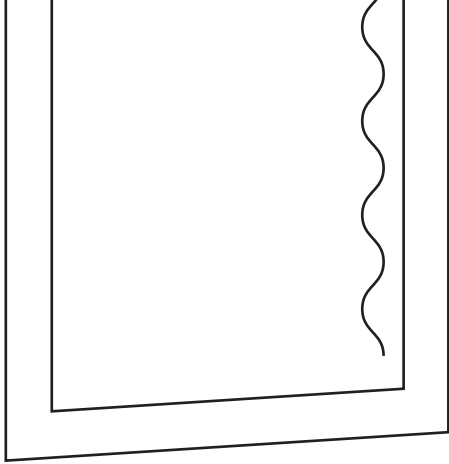
Parmenture



coudre à la doublure / sew to lining

longueur blouson/ Jacket lenght

Parmenture



longueur manteau/Coat length



Robe à col / Collar dress
Avant / Front
x1

